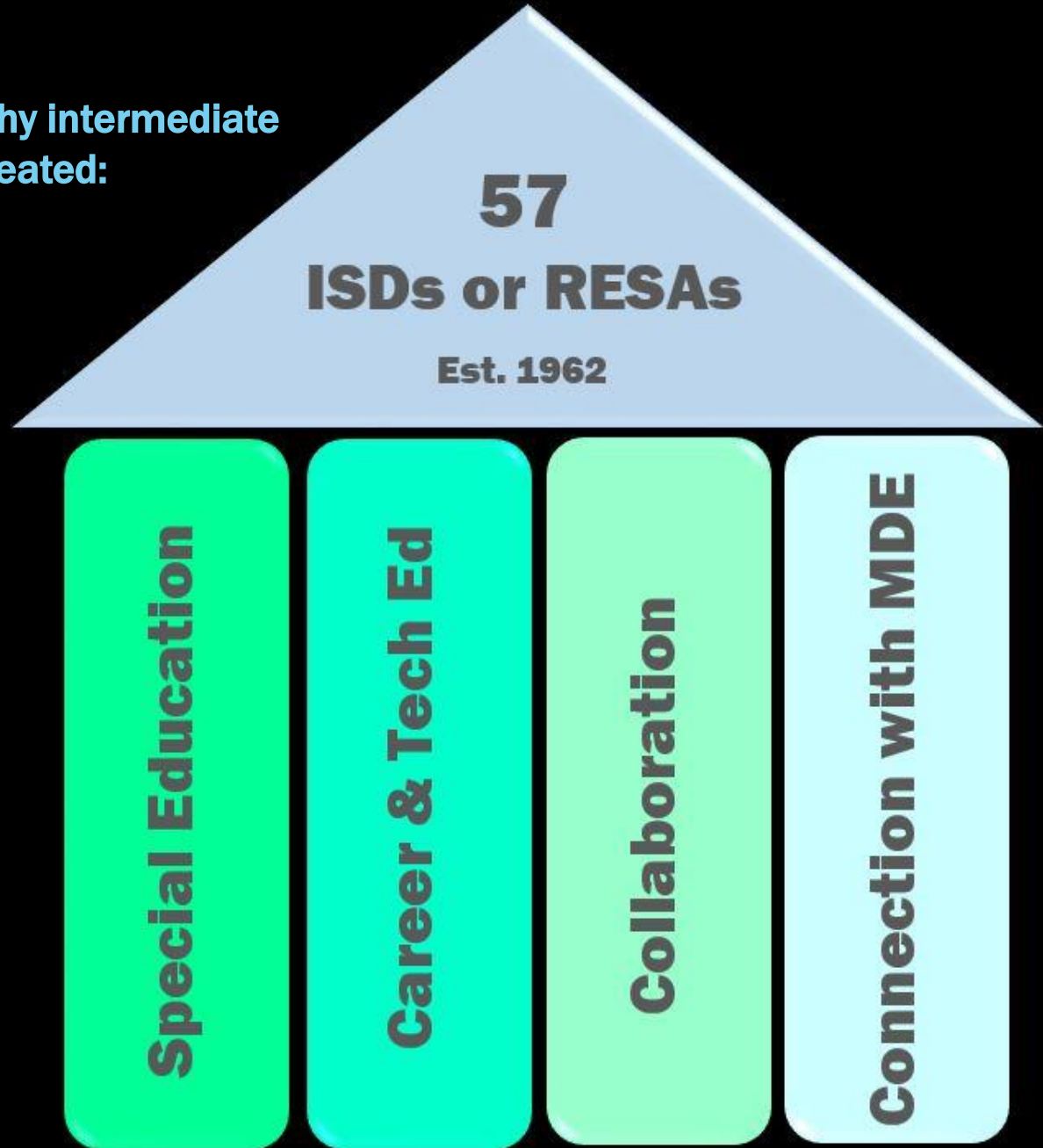




Kalamazoo  
RESA

planting seeds of learning

Some of the reasons why intermediate school districts were created:



# Our Mission

The **Kalamazoo Regional Educational Service Agency** exists to transform lives by inspiring **educational excellence**. We provide cradle-to-career services and support through highly talented professionals, successful partnerships and innovative practices.



## **Public Schools**

Climax-Scotts Community Schools  
Comstock Public Schools  
Galesburg-Augusta Community Schools  
Gull Lake Community Schools  
Kalamazoo Public Schools  
Parchment School District  
Portage Public Schools  
Schoolcraft Community Schools  
Vicksburg Community Schools

## **Public School Academies**

Youth Advancement Academy  
Oakland Academy  
Paramount Charter Academy  
Forest Academy  
Evergreen Academy  
Lakeside Academy

*18 non-public schools*

# Board of Education



**Gary Brown**  
Secretary

**James Harrington**  
President

**Delores Myers**  
Trustee

**David Webster**  
Treasurer

**Skip Knowles**  
Vice-President

# Kalamazoo RESA Programs

**Our programs serve educators and families from cradle to career. Through collaboration and countywide partnerships, we provide cost-effective programs and services in several categories, such as:**

- **Early childhood**
- **Special education**
- **Career and technical education**
- **Professional development**
- **Business and technology services**



**We do all that, and more! The next slides provide an overview of our programs. Numbers and statistics are based on information from the 2013-2014 school year.**

**For additional information, go to [www.kresa.org](http://www.kresa.org)**

# Great Start



**Ready, Set, Succeed!**  
Playgroups, developmental screenings and monthly contacts from a parent educator.

# Great Start Plus

- Children ages 0-3
- At-risk families are eligible to receive services with the Great Start Plus program
- Home visits and developmental screenings
- Playgroups
- Information and referrals

**241**

at-risk families  
received home visits

**72**

playgroups

**591**

referrals for 0-3 year old  
developmental screening

**102**

monthly home  
or mail visits

## Early Childhood

### Preprimary Evaluation Team

- Developmental assessment
- For children ages 0-6
- For children who may have a significant developmental delay

400

evaluations



Funded by Kalamazoo RESA special education budget

## Early On

Coordinates services for children who have a minimal degree of developmental delay.

500

families

### Family, Infant, Toddler Program (FIT)

- Home visits
- Teacher consultants and therapists
- Children with developmental delays or physical, hearing or visual impairments

240

families

# Great Start Readiness Program

**1,332**

children

**74**

classrooms



- **Kalamazoo RESA acts as program facilitator, monitor and fiduciary agency**
- **Operated by and located within schools and private providers**
- **Preschool program for 4-year-olds**
- **Ensuring low-income families have access to high-quality pre-K**



# Kalamazoo RESA Head Start

- High quality pre-K
- 13 locations
- 10 family advocates doing home visits

80

classroom staff

29

classrooms

644

children



Funded by federal grants

# WoodsEdge Learning Center

- Serves students between the ages of 3-26
- Autism program
- Students with severe cognitive and physical disabilities

300

students



# Special Education

## Hearing Impaired Program

- Teachers, consultants and interpreters
- Implement services for students with hearing impairments

**20**

HI classroom students

**150**

students served

## Visually Impaired Program

- Teacher consultants, mobility and Braille specialists
- Support and adaptive equipment

**105**

students served

Funded by Kalamazoo RESA special education budget



# Special Education

## Juvenile Home Schools

- Intensive Learning Center
- Youth Center School
- Adjudicated Youth

**100**

students

## Valley Center School

- Students with emotional impairments or unique behavioral needs

**40**

students



Funded by Kalamazoo RESA special education budget

# Special Education

## Autism Program

- Serves grades K – 12
- Training and support for parents
- Classrooms in local districts and WoodsEdge

90

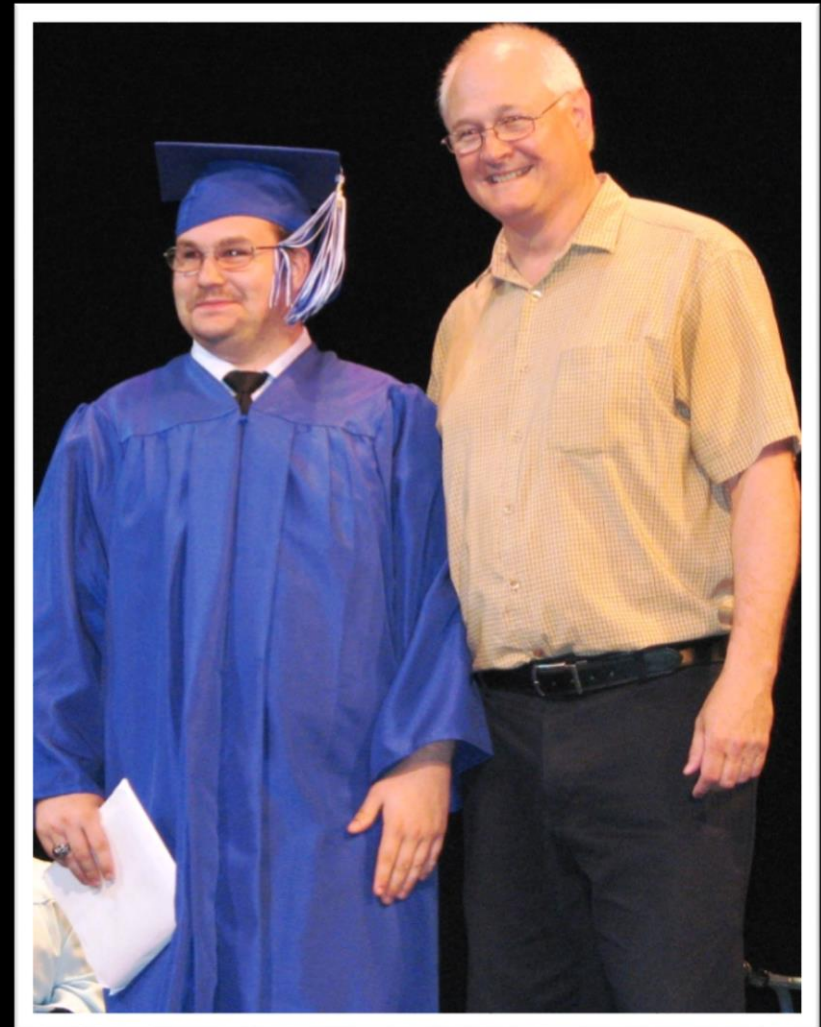
locally-based students

## Young Adult Program (YAP)

- Serves 18-26 year olds
- Provides tools to make a successful transition into a meaningful and more independent lifestyle
- Transition services

130

students



# Education for the Arts

K-12 arts education in film, digital media, dance, theatre and more



**570**

students  
taking classes

**174**

scholarships

**32,800**

students attended  
art events

Funded by local district fees, local agency grants, Kalamazoo RESA general fund

# Education for Employment

- Practical work experience and hands-on career preparation training
- Classes include health sciences, law enforcement, computerized manufacturing, technology and more
- Developing early/middle college program
- Project Lead the Way program



**3,700**  
students

**174**  
classes in 36  
areas of study

**84**  
scholarships

**400**  
business and  
industry partnerships

# Youth Opportunities Unlimited

- Employment and training services
- Serves in-school and out-of-school youth
- Education Reconnection offers GED pre/testing, Adult Basic Education, online courses, computer skill development, job search assistance and a paid work experience
- In partnership with Michigan Works!
- Four locations in Kalamazoo, St. Joseph, and Branch counties

# 104

summer youth workers

# 44

credit recovery graduates



Funded by federal grants and local agency grants



# Attendance Office

- Helps families and children struggling with regular school attendance
- The attendance officer, a deputy sheriff, provides support and links families to community resources

**549**

truancy referrals



# Instructional Center

Services and support to districts and schools to improve student achievement

# 1,752

professional development participants

# 110

workshops

# 208

days of consulting



Funded by state aid, state grants, federal grants, local district fees, Kalamazoo RESA general fund

# Regional Educational Media Center (REMC12)

- One of 22 REMCs in the state
- Offers the Teacher Materials Center, cooperative purchasing and other services
- Printing services are available to districts throughout Michigan



# 16,000

education and non-profit  
print jobs

# \$1.9 million

REMC Bid savings

# 35,500

videos streamed

## Counties served by REMC12:

- Calhoun
- Kalamazoo
- St. Joseph
- Van Buren

Offering connecting  
service to REMC7 &  
REMC11.

Funded by fee for service

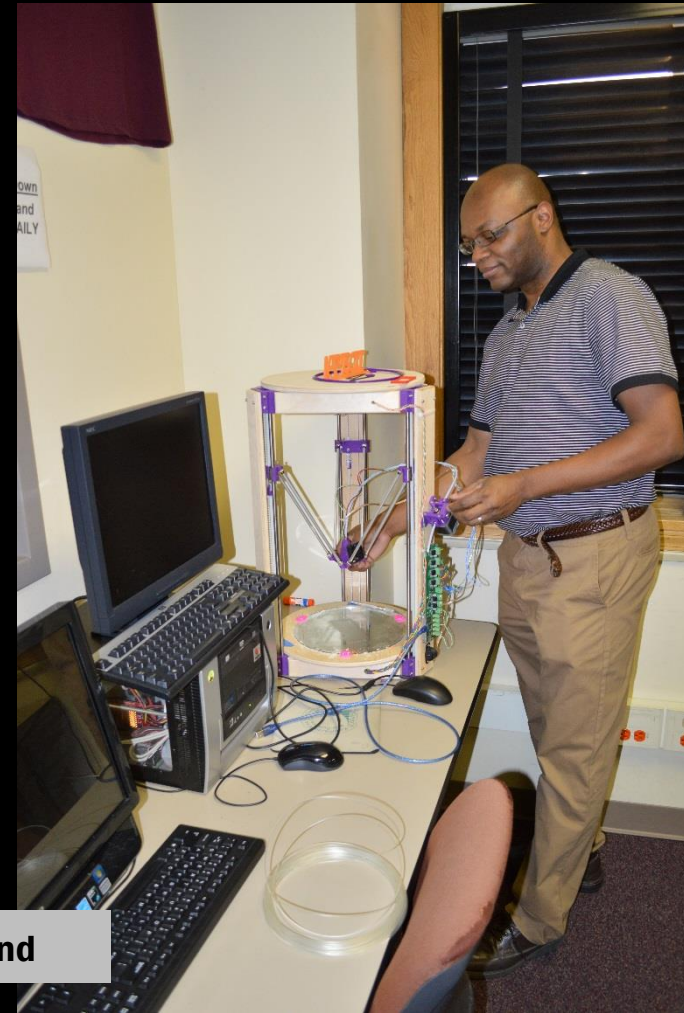
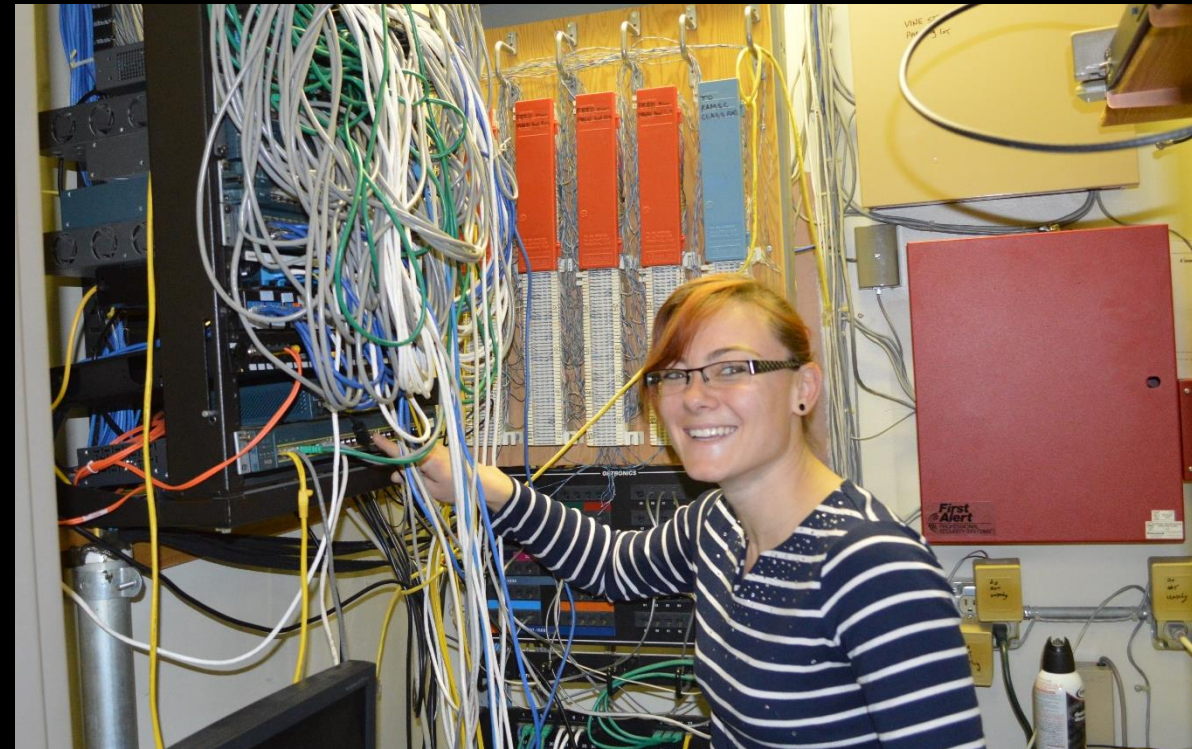
# MiTech

MiTech technology services and staffing is provided to Kalamazoo RESA and the following school districts:

- Galesburg-Augusta
- Gull Lake
- Delton-Kellogg Schools
- KAMSC
- Portage
- Mattawan
- Van Buren ISD
- Allegan AESA
- Paw Paw
- Fennville
- Hastings

# 30

technology staff



Funded by local district fees, state grants, Kalamazoo RESA general fund



In 2007, we joined with several area ISDs to form a consortium called

**Michigan Collaborative Administrative Solutions for Education (MiCase)**

- **MiCase provides financial accounting, human resources, payroll, student information and special education software**
- **Kalamazoo RESA serves as fiscal agent and houses the majority of development and support staff**

Funded by local district fees

**58**

districts use MiCase human resources and financial accounting software

**41**

districts use Student Information System

**4,040**

Help Desk support calls

**\$755,000**

saved in discounted software and other technology offerings

# Transportation Services

- Serves districts in nine counties
- Bus driver training and management
- Auto, trucking and motorcycle skills testing

98

drivers trained in evasive maneuvers

220

commercial driver's license skills tests performed

1,150

bus drivers trained



# Additional Services

- **Local Educational Agency Business Services**
- **LEA Maintenance Services**
- **Facilities Control & Energy Management**
- **Instructional Technology**
- **Human Resources**
- **Communications**
- **Substitute Teachers**
- **Pupil Accounting**



# Lakeside Charter School

- Kalamazoo RESA is the authorizer
- A public school operated by an independent board of education
- Residential-based
- Strict discipline academy
- Peer driven model teaches respect, responsibility, trust and giving



Funded by the State of Michigan per pupil foundation allowance, and other state and federal funding. Kalamazoo RESA retains 3 percent of per pupil funding for chartering agency expenses.



# Youth Advancement Academy

- Kalamazoo RESA is the authorizer
- A public school operated by an independent board of education
- A strict discipline academy
- Serves students from Kalamazoo County in grades 9-12



Funded by the State of Michigan per pupil foundation allowance, and other state and federal funding. Kalamazoo RESA retains 3 percent of per pupil funding for chartering agency expenses.

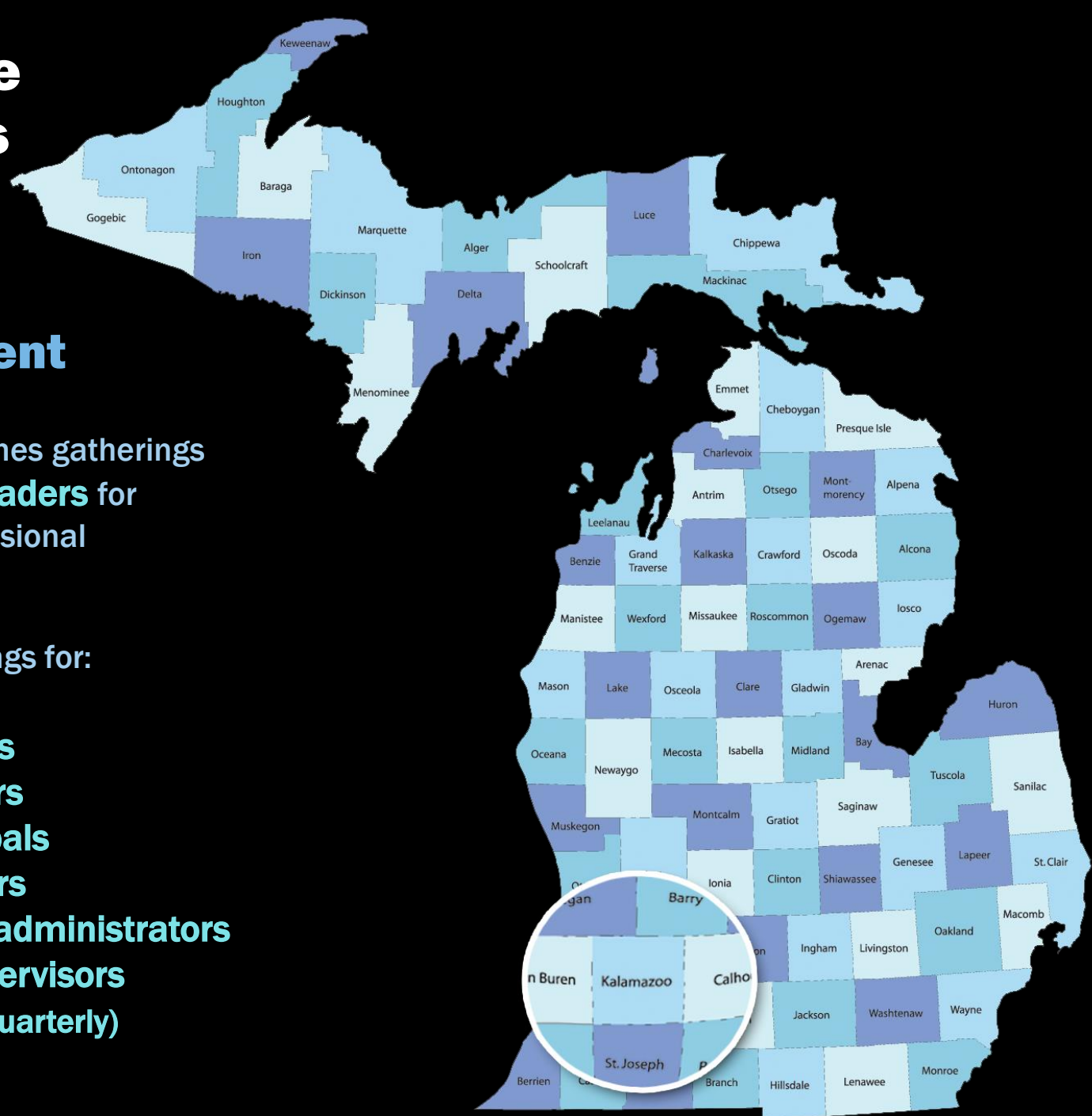
# Collaborative Partnerships

## Leadership Coordination and Development

Kalamazoo RESA convenes gatherings of **all county school leaders** for collaboration and professional development.

We hold monthly meetings for:

- **superintendents**
- **business managers**
- **curriculum directors**
- **high school principals**
- **technology directors**
- **special education administrators**
- **transportation supervisors**
- **board members (quarterly)**



# Collaborative Partnerships

## Community Alliances

The Learning Network  
Western Michigan  
University

Kalamazoo Valley  
Community College

Kalamazoo Air Zoo  
Kalamazoo Valley

Habitat for Humanity  
Kalamazoo Department  
of Public Safety

Kalamazoo County Great  
Start Collaborative

Greenleaf Hospitality  
Group

Stryker Instruments  
Flowserve Corp.

W.E. Upjohn Institute  
Arts Schools Network

Southwest Michigan First  
Kalamazoo Community  
Foundation

Bronson Methodist  
Hospital  
Michigan Rehabilitation  
Services

Kalamazoo Community  
Mental Health and  
Substance Abuse  
Services

Bureau of Services for  
Blind Persons

Disability Network of  
Southwest Michigan  
Southern Mich. Autism  
Resource Team

Kalamazoo County  
Ready 4s

Kalamazoo County  
Human Services

Irving S. Gilmore  
Foundation

**And more . . .**

# 2014-2015 General Education Fund Budget

DESCRIPTION	REVENUES	EXPENDITURES
PROPERTY TAXES	1,045,862	-
STATE AID - SEC 81	1,195,152	-
OTHER	811,771	-
GENERAL ADMIN. & MAINTENANCE	-	1,914,483
TECHNOLOGY SERVICES	2,090,277	2,319,459
READY, SET, SUCCEED!/GREAT START/GSRP	5,931,995	6,043,091
REMC - MEDIA	812,773	856,615
INSTRUCTIONAL CENTER	1,111,555	1,555,017
EDUCATION FOR THE ARTS (EFA)	1,743,261	1,840,605
EDUCATION FOR EMPLOYMENT (EFE)	1,533,888	1,786,386
YOUTH OPPORTUNITIES UNLIMITED (YOU)	3,103,695	3,185,966
REGIONAL TRANSPORTATION	339,292	327,551
HEAD START	5,052,799	5,052,799
ENHANCEMENT MILLAGE	10,957,876	10,957,876
MEDICAID MICHIGAN OUTREACH	86,000	73,000
<b>TOTAL</b>	<b>35,816,196</b>	<b>35,912,848</b>

**REVENUES OVER EXPENDITURES** **(96,652)**

**FUND BALANCE JULY 1** **4,828,109**

**FUND BALANCE JUNE 30** **4,731,457**

**ASSIGNED FUND BALANCE - RTSI** **225,151**

**UNASSIGNED FUND BALANCE** **4,506,306**

- This budget is supported by a tax levy of 0.1446 mills and Enhancement tax levy of 1.5 mills
- Go to [www.kresa.org](http://www.kresa.org) and click on Transparency Reporting for more information.

# 2014-2015 Original Special Education Fund Budget

REVENUES	
LOCAL (Tax Collections - \$21M, Medicaid \$1.7M, Local Grants)	22,983,904
STATE (State Aid)	5,357,411
FEDERAL (IDEA, Early On)	7,857,089
OTHER SOURCES (Tuition from out-of-county schools)	55,000
<b>TOTAL REVENUE</b>	<b>36,253,404</b>

EXPENDITURES	
KALAMAZOO RESA PROGRAMS	27,011,978
PAYOUT TO LOCAL DISTRICTS	9,241,426
<b>TOTAL EXPENDITURES</b>	<b>36,253,404</b>

REVENUES OVER EXPENDITURES -

FUND BALANCE – JULY 1 700,000

FUND BALANCE – JUNE 30 700,000

\* This budget is supported by a tax levy of 2.897 mills and 0.35 debt millage rate



KALAMAZOO RESA  
**FOUNDATION**

- Helping all learners thrive
- Student scholarships
- YOU participant grants
- Employee enrichment grants

**\$40,000**

awarded in 2014



Francis "Max" Smith, Named  
Scholarship Donor

# Kalamazoo RESA Strategic Plan

## Why do we exist?

To transform lives by inspiring educational excellence

## How do we behave?

We work together *Collaboration*

We find a better way *Innovation*

We lead with heart *Compassion*

We act with integrity *Trustworthy*

We value all people *Respect*

## What do we do?

Provide educational services and support for students, families, schools and community.

## How will we succeed?

Through highly talented professionals, successful multi-sector partnerships, innovative practices and a relentless drive to improve.

## What are we focused on?

- All learners supported through strong collaborative relationships
- Highly effective employees
- Positive, safe and inclusive organizational culture
- All children ready for kindergarten
- All students transition ready for college, career, or life
- Leaders in educational excellence
- Data driven organizational practices
- Quality and sustainable infrastructure
- Research-based instructional practices
- A continuum of professional development to support high-quality instruction and leadership
- Visibility and understanding of Kalamazoo RESA programs and services



## Ways to connect:



[facebook.com/kalresa](https://facebook.com/kalresa)



[twitter.com/kalresa](https://twitter.com/kalresa)



[pinterest.com/kalamazoorsa](https://pinterest.com/kalamazoorsa)

[www.kresa.org](http://www.kresa.org)